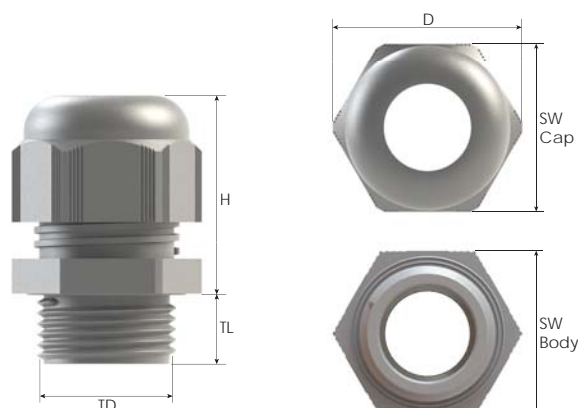


Standard Glands with Thread, Polyamide



Thread Type **NPT** acc. to ANSI B1.20.1

Size	Clamping Range Ø min-max		Thread Length TL		Thread Ø TD		Spanner Width SW Cap		Spanner Width SW Body		Outer Ø D		max. Height H		RAL 7035 light grey	Part Number			Packing Unit
	mm	Inch	mm	Inch	mm	Inch	mm	Inch	mm	Inch	mm	Inch	mm	Inch		RAL 7001 grey	RAL 9005 black		
NPT 3/8"	3,0 - 7,0	0.118 - 0.276	15	0.591	17,14	0.675	22	0.866	22	0.866	25,0	0.984	29,0	1,141	BSPA-11R	BSPA-01R	BSPA-21R	50	
	5,0 - 10,0	0.197 - 0.394													BSPA-11	BSPA-01	BSPA-21		
	5,0 - 9,0	0.197 - 0.354	15	0.591	21,34	0.840	24	0.945	24	0.945	27,0	1.063	29,0	1,141	BSPB-12R	BSPB-02R	BSPB-22R		
6,0 - 12,0	0.236 - 0.472	BSPB-12													BSPB-02	BSPB-22			
NPT 1/2"	7,0 - 12,0	0.276 - 0.472	11	0.433	21,34	0.840	27	1.063	27	1.063	30,9	1.217	31,0	1,220	BSPC-12R	BSPC-02R	BSPC-22R	50	
	10,0 - 14,0	0.394 - 0.551													BSPC-12	BSPC-02	BSPC-22		
	9,0 - 16,0	0.354 - 0.630	15	0.591	26,67	1.050	33	1.299	33	1.299	38,0	1.496	37,0	1,456	BSPD-13R	BSPD-03R	BSPD-23R		
13,0 - 18,0	0.512 - 0.709	BSPD-13													BSPD-03	BSPD-23			
NPT 3/4"	12,0 - 20,0	0.472 - 0.787	18	0.709	33,40	1.315	42	1.654	42	1.654	47,3	1.862	41,0	1,614	BSP-14R	BSP-04R	BSP-24R	20	
	18,0 - 25,0	0.709 - 0.984													BSP-14	BSP-04	BSP-24		

Thread Type **PG** acc. to DIN 40430

Size	Clamping Range Ø min-max mm	Thread Length TL mm	Thread Ø TD mm	Spanner Width		Outer Ø D mm	max. Height H mm	RAL 7035 light grey	Part Number			Packing Unit
				SW Cap mm	SW Body mm				RAL 7001 grey	RAL 9005 black		
PG 7	2,0 - 5,0	8	12,5	15	15	16,9	22,0	BSR-11	BSR-01	BSR-21	100	
	3,0 - 6,5							BS-11	BS-01	BS-21		
PG 9	2,0 - 6,0	8	15,2	19	19	21,9	26,5	BSR-12	BSR-02	BSR-22	50	
	4,0 - 8,0							BS-12	BS-02	BS-22		
PG 11	3,0 - 7,0	8	18,6	22	22	25,0	29,0	BSR-13	BSR-03	BSR-23	50	
	5,0 - 10,0							BS-13	BS-03	BS-23		
PG 13,5	5,0 - 9,0	10	20,4	24	24	27,0	29,0	BSR-14	BSR-04	BSR-24	50	
	6,0 - 12,0							BS-14	BS-04	BS-24		
PG 16	7,0 - 12,0	10	22,5	27	27	30,9	31,0	BSR-15	BSR-05	BSR-25	50	
	10,0 - 14,0							BS-15	BS-05	BS-25		
PG 21	9,0 - 16,0	11	28,3	33	33	38,0	37,0	BSR-16	BSR-06	BSR-26	25	
	13,0 - 18,0							BS-16	BS-06	BS-26		
PG 29	12,0 - 20,0	11	37,0	42	42	47,3	41,0	BSR-17	BSR-07	BSR-27	20	
	18,0 - 25,0							BS-17	BS-07	BS-27		
PG 36	20,0 - 26,0	13	47,0	53	53	60,0	51,5	BSR-18	BSR-08	BSR-28	10	
	22,0 - 32,0							BS-18	BS-08	BS-28		
PG 42	25,0 - 31,0	13	54,0	60	60	67,8	53,5	BSR-19	BSR-09	BSR-29	10	
	30,0 - 38,0							BS-19	BS-09	BS-29		
PG 48	29,0 - 35,0	14	59,3	65	65	72,9	53,5	BSR-20	BSR-10	BSR-30	10	
	34,0 - 44,0							BS-20	BS-10	BS-30		

Thread Type **G** acc. to DIN ISO 228

Size	Clamping Range Ø min-max mm	Thread Length TL mm	Thread Ø TD mm	Spanner Width		Outer Ø D mm	max. Height H mm	RAL 7035 light grey	Part Number			Packing Unit
				SW Cap mm	SW Body mm				RAL 7001 grey	RAL 9005 black		
G 1/4"	2,0 - 5,0	10	13,160	15	15	16,9	23,0	BPFR-1S	BPFR-0S	BPFR-2S	100	
	3,0 - 6,5							BPF-1S	BPF-0S	BPF-2S		
G 3/8"	3,0 - 7,0	11	16,662	22	22	25,0	29,0	BPFR-11	BPFR-01	BPFR-21	50	
	5,0 - 10,0							BPF-11	BPF-01	BPF-21		
G 1/2"	5,0 - 9,0	10	20,955	24	24	27,0	29,0	BPFR-12	BPFR-02	BPFR-22	50	
	6,0 - 12,0							BPF-12	BPF-02	BPF-22		
	7,0 - 12,0	11	20,955	27	27	30,9	31,0	BPFR-13	BPFR-03	BPFR-23		
	10,0 - 14,0							BPF-13	BPF-03	BPF-23		
G 3/4"	9,0 - 16,0	12	26,441	33	33	38,0	37,5	BPFR-14	BPFR-04	BPFR-24	25	
	13,0 - 18,0							BPF-14	BPF-04	BPF-24		
G 1"	12,0 - 20,0	13	33,249	42	42	47,3	41,5	BPFR-15	BPFR-05	BPFR-25	20	
	18,0 - 25,0							BPF-15	BPF-05	BPF-25		